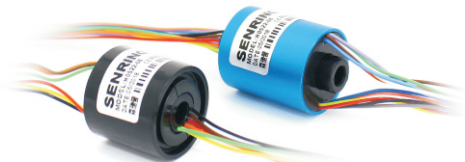


H0522 Series

H0522 series standard precise slip ring, integrated structure design, with through hole 5mm , OD22mm , suitable for rotating application which requires a through hole $\leq 5\text{mm}$ (remark: if need a hole $< 5\text{mm}$, can add a inner bushing)



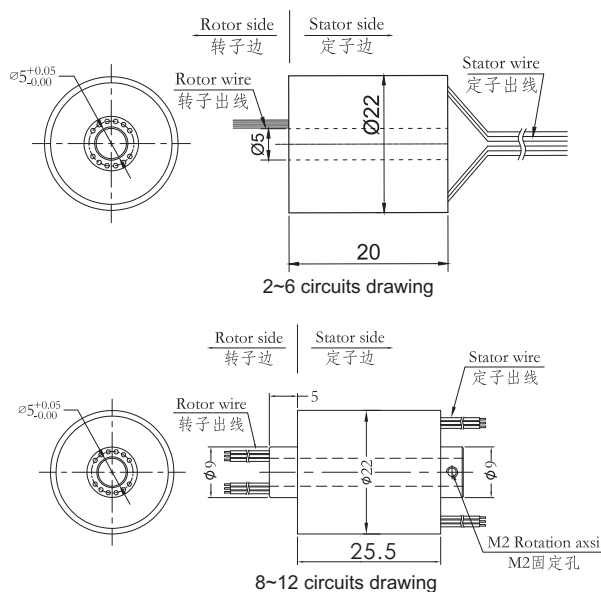
Part No. Description

H0522 - Signal circuits no. - Erodect grade

H:through hole slip ring
0522:ID 5mm, OD 22mm

Example:
06S:6circuits signal (0~2A)
12S:12circuits signal (0~2A)

Example:
C: standard level
D:Industrial level
H:High quality level



Standard Model List

| H0522 series model list | | |
|-------------------------|-------------------------------|--------------|
| Part no. | Circuits no. (signal or 0~2A) | Length L(mm) |
| H0522-06S | 6 | 20 |
| H0522-12S | 12 | 25.5 |

*Remark: Circuits can be combined in parallel for bigger current,N circuits of 2A to get $N*2\text{A}$, such as 2 circuits of 2A in parallel for 4A use.

Technical Specification

| Mechanical | | Electrical | |
|------------------|--|-----------------------|--|
| Spec | Data | Spec | Data |
| Working life | pls refer to product grade table | Rated voltage | 0~240VAC/VDC |
| Rotating speed | pls refer to product grade table | Insulation resistance | $\geq 500\text{m}\Omega/500\text{VDC}$ |
| Working temp. | $-30^{\circ}\text{C}\sim 80^{\circ}\text{C}$ | Lead wire spec. | AWG26# Silver-plated teflon |
| Work humidity | 0~85% RH | Lead wire length | standard 300mm(can be customized) |
| Contact material | pls refer to produce grade table | Dielectric Strength | 500VAC@50Hz,60s |
| Housing material | AL alloy | Electrical noise | $< 0.01\Omega$ |
| Torque | 0.05N.m (+0.02N.m/6circuits) | | |
| IP grade | IP51 | | |

Color code of Lead Wire

| ring# | 1 | 2 | 3 | 4 | 5 | 6 | 7 | 8 | 9 | 10 | 11 | 12 |
|-------|-----|-----|-----|-----|-----|-----|-----|-----|-----|-----|------|---------|
| color | BLK | BRN | RED | ORG | YEL | GRN | BLU | PUR | GRY | WHT | PINK | LGT BLU |