

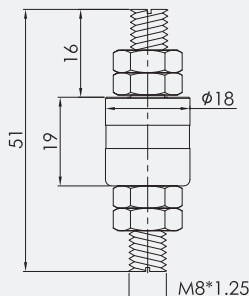
## single channel high current slip ring

single channel,current ranges from 50~300A;

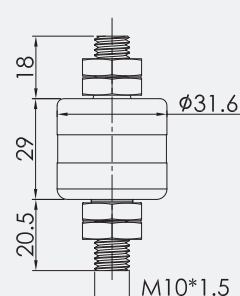
Senring single channel high current slip ring,current ranges:50A、100A、250A、500A、1500A、3000A,compact size,fixed by screw terminal installation,developed specially for welding, electroplating and other industries,with convenient installation, light weight and large load current.



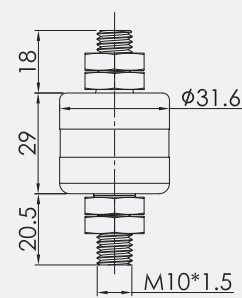
Model	20180150
Circuits	1 circuit
Max current	50A
Max speed	2000RPM
working temp.	-29℃~+60℃



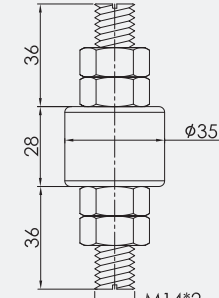
Model	203101100
Circuits	1 circuit
Max current	100A
Max speed	2000RPM
working temp.	-29℃~+60℃



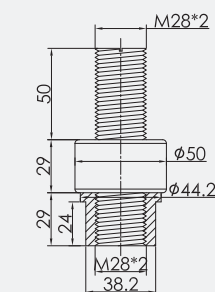
Model	203101250
Circuits	1 circuit
Max current	250A
Max speed	1200RPM
working temp.	-29℃~+60℃



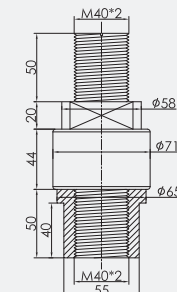
Model	203501500
Circuits	1 circuit
Max current	500A
Max speed	300RPM
working temp.	-29℃~+60℃



Model	2050011500
Circuits	1 circuit
Max current	1500A
Max speed	150RPM
working temp.	-29℃~+60℃

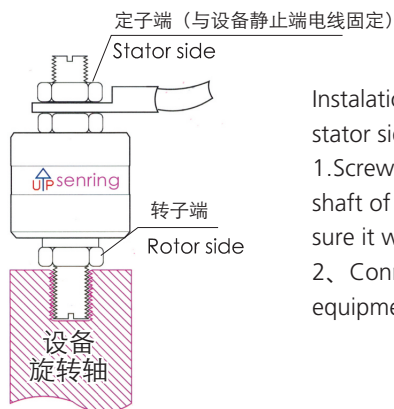


Model	2071013000
Circuits	1 circuit
Max current	3000A
Max speed	100RPM
working temp.	-29℃~+60℃



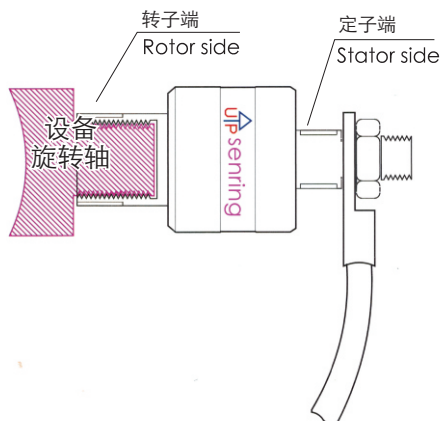
## Installation

Senring single channel large current slip ring with many structures, below are the two most popular structures, installation guide as following:



Installation guide for slip ring with external thread on both rotor and stator side:

1. Screwing the rotor side into the inner thread hole of the rotating shaft of the equipment clockwise, fix the screw of the rotor side, make sure it well fixed with the rotating shaft of the equipment.
2. Connecting the stator side of the slip ring with the stator side of the equipment through the screw at the stator side of the slip ring.



Instalation guide for slip ring with internal thread on rotor side and external thread on stator side :

- 1 screw slip ring rotor into the rotating shaft with external thread tightly
- 2 connect slip ring stator to equipment cable by fixing the screws of slip ring stator