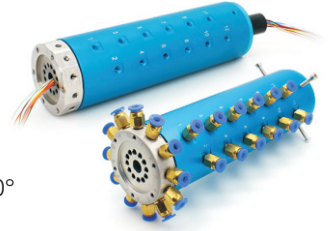


3016004 Series 16 Passages Pnuematic/Hydraulic+Electric Rotary Unions

16 Passage(M5 port,4mm pipes)+Electrical(Power/Signal)

support M5 port for 4mm pipes,can transfer various mediums including compressed air,steam,vacuum,negative pressure,positive pressure,cooling water,hot oil,etc when 360° rotating , it also can combine to transmit electrical power and signal.



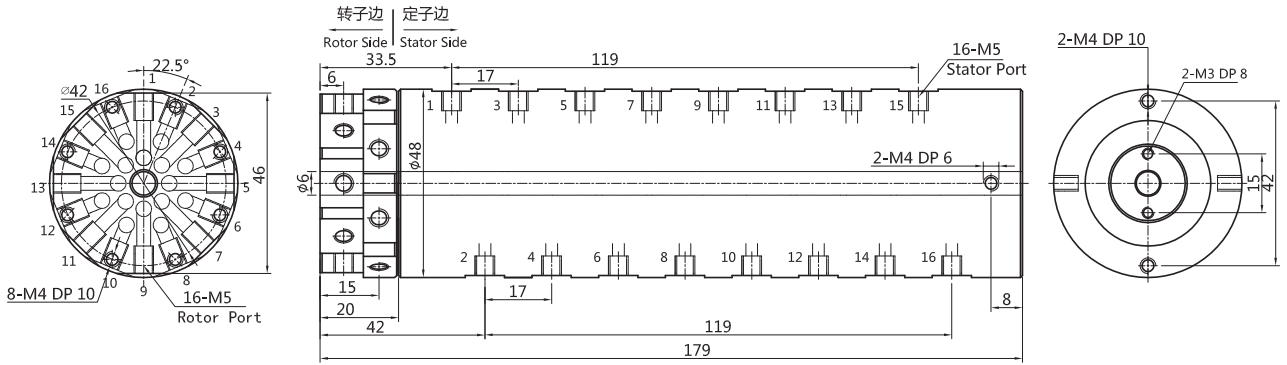
Part No. Description

[3016004](#) - Signal Circuits

16 Passage Rotary Unions
support 16 M5 port for 4mm pipes

For example:
06S:6 circuits signal@2A
12S:12 circuits signal@2A

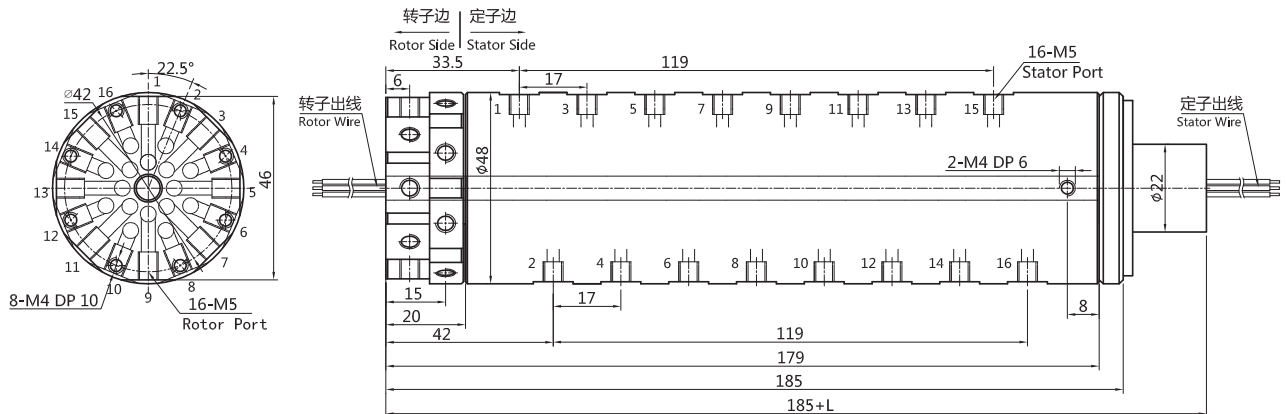
3016004 (Rotary Union Only) Drawing,16 Passage(4mm pipe)



Standard Model List

| Model | Passages(Gas/Flow) | Port Size | Pipe Size |
|-------------------------|--------------------|-----------|-----------|
| 3016004 | 16 | M5 | 4~6mm |

3016004-X4S 16 Passage(4mm pipe)
+6~36 circuits electrical signal@2A (Suitable for Solenoid valve or Sensor switch Signals)



Standard Model List

| Model | Passages(Gas/Flow) | Port Size | Pipe Size | Signal Circuits(2A) | Length L(mm) |
|-------------|--------------------|-----------|-----------|---------------------|--------------|
| 3016004-06S | 16 | M5 | 4~6mm | 6 | 14 |
| 3016004-12S | 16 | M5 | 4~6mm | 12 | 21 |
| 3016004-24S | 16 | M5 | 4~6mm | 24 | 35 |
| 3016004-36S | 16 | M5 | 4~6mm | 36 | 52 |

Technical Specification

| Rotary Union Specification | | | | |
|----------------------------|---|-----------------------|-----------------------------------|----------------------------------|
| Passages | 16 Passage | Max. Pressure | 1Mpa, Vacuum -1.5kPa | |
| Pipe size | 4mm Pipe(M5) | torque | <1.6N.m | |
| Mechanical parameters | | Electrical parameters | | |
| Spec. | Data | Spec. | Data | |
| Working Life | 20millions for ref (depends on working conditions) | | Power | Signal |
| Max. Speed | 250RPM continously, 1000RPM intermittently | Voltage Range | 0~240VAC/VDC | 0~240VAC/VDC |
| | | Insulation Resistance | <500M Ω /300VDC | <500M Ω /300VDC |
| Working Temp. | -30 $^{\circ}$ C~80 $^{\circ}$ C | Lead Wire Spec. | AWG26# Silver-plated teflon wire | AWG26# Silver-plated teflon wire |
| Work Humidity | 0~85% RH | Lead Wire Length | standard 250mm(can be customized) | |
| Contact Material | precious metal | Insulation Resistance | 500VAC@50Hz,6s | |
| Housing Material | aluminum alloy | Electrical Noise | <0.01 Ω | |
| IP Grade | IP51 | | | |

Color Code of Lead Wire

| ring # | 1 | 2 | 3 | 4 | 5 | 6 | 7 | 8 | 9 | 10 | 11 | 12 |
|--------|-----|-----|-----|-----|-----|-----|-----|-----|-----|-----|------|---------|
| color | BLK | BRN | RED | ORG | YEL | GRN | BLU | PUR | GRY | WHT | PINK | LGT BLU |